

# TE TOMOKANGA TOITŪ TE WHĀNAU

*A Bold Vision for Whanganui's Future*



Toitū Te Kupu

-

Toitū Te Mana

-

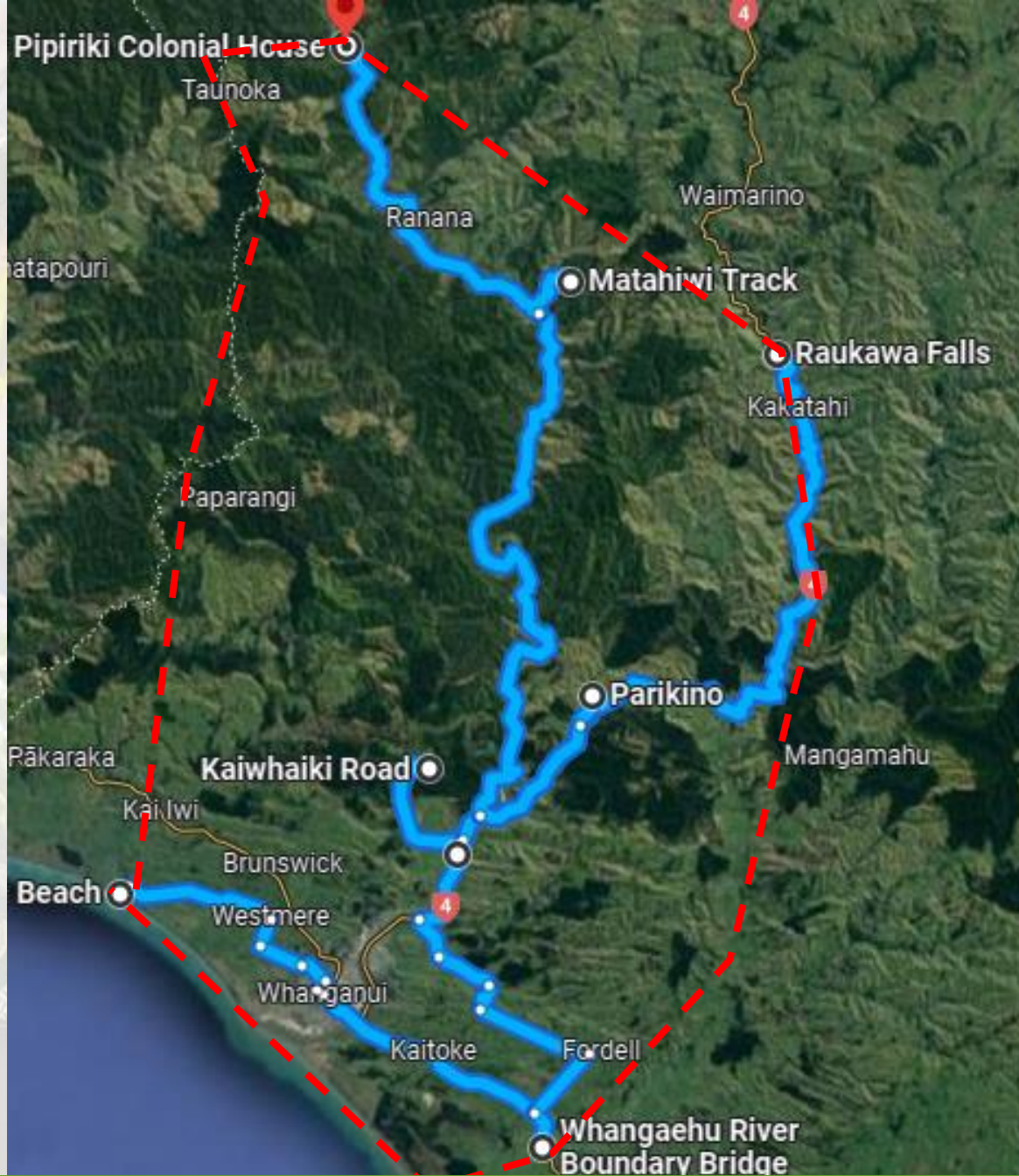
Toitū Te Whenua

# TOITŪ TE WHĀNAU

## *Proposed Rohe*

This map depicts the **proposed** area where the Toitū te Whānau framework applies.

*The area identified on this map does not represent an exclusive claim area or area of exclusive interest and includes areas in which other iwi/hapū have interests.*



Toitū Te Kupu

-

Toitū Te Mana

-

Toitū Te Whenua



# TOITŪ TE WHĀNAU

*He ao āpōpō, he ao tea*

*Our legacy, our aspiration, our future*



## VISION

We will strengthen all whānau by placing them at the heart of our well-being decision-making to meet our genuine local needs.

## MISSION

Uniting to improve the well-being of our whānau and community.

## PURPOSE

To reposition and redesign our well-being landscape by providing a platform for strategic governance to **mahi ngātahi** to provide the best possible position to improve the well-being of our Whānau, Hapū, Iwi and Hāpori within our Te Whare Kāho o Whanganui.

## KEY STRATEGY

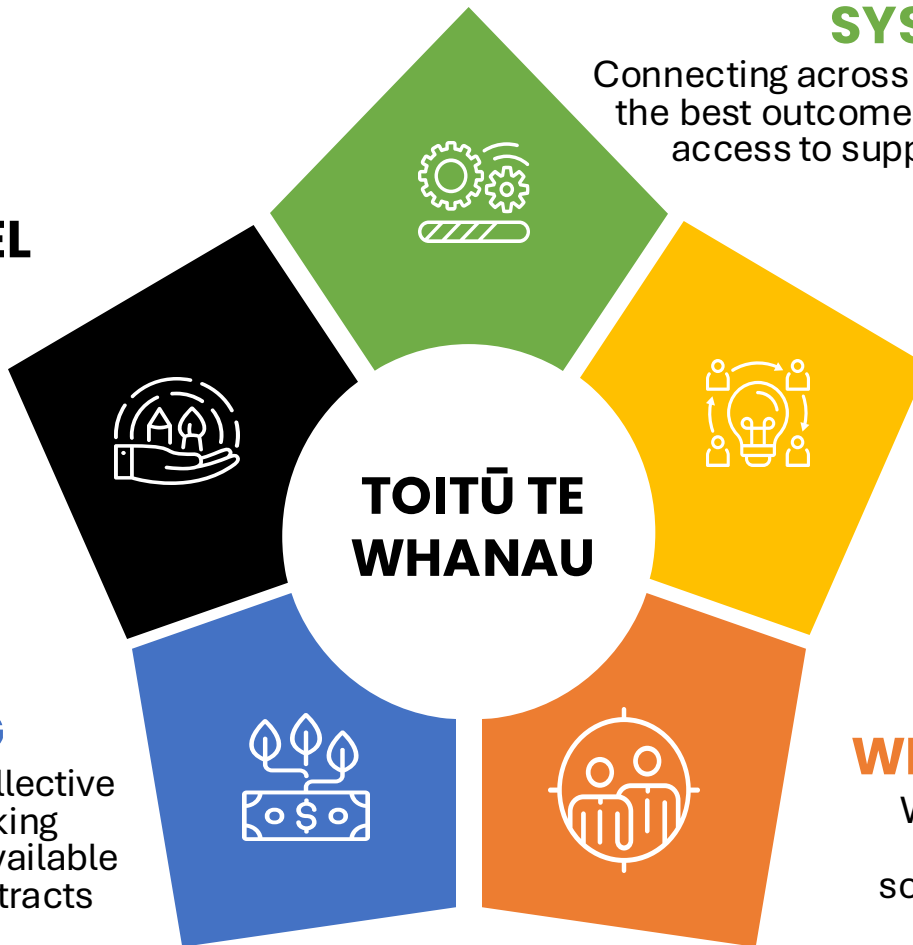
To use a values-based approach to establish meaningful relationships.

Toitū te Whānau reflects true partnership where our worldviews and practices are combined to guide strategic direction in a way that is responsive to the needs of whānau.

**THE APPROACH** has five elements: System, Design, Whānau Engagement, Resourcing, and a Community Operating Model. Collectively, these elements aim to create change and improve outcomes for whānau. Each element requiring something new and different from the status quo.

## COMMUNITY OPERATING MODEL

Whānau centred and solution focused. The awa and whenua create a unique opportunity for change.



## SYSTEM

Connecting across the system to achieve the best outcomes for whānau. Faster access to support and services.

## DESIGN

A single plan across the site. Spaces are whānau centred. Whanganuitanga is represented in all design elements.

## RESOURCING

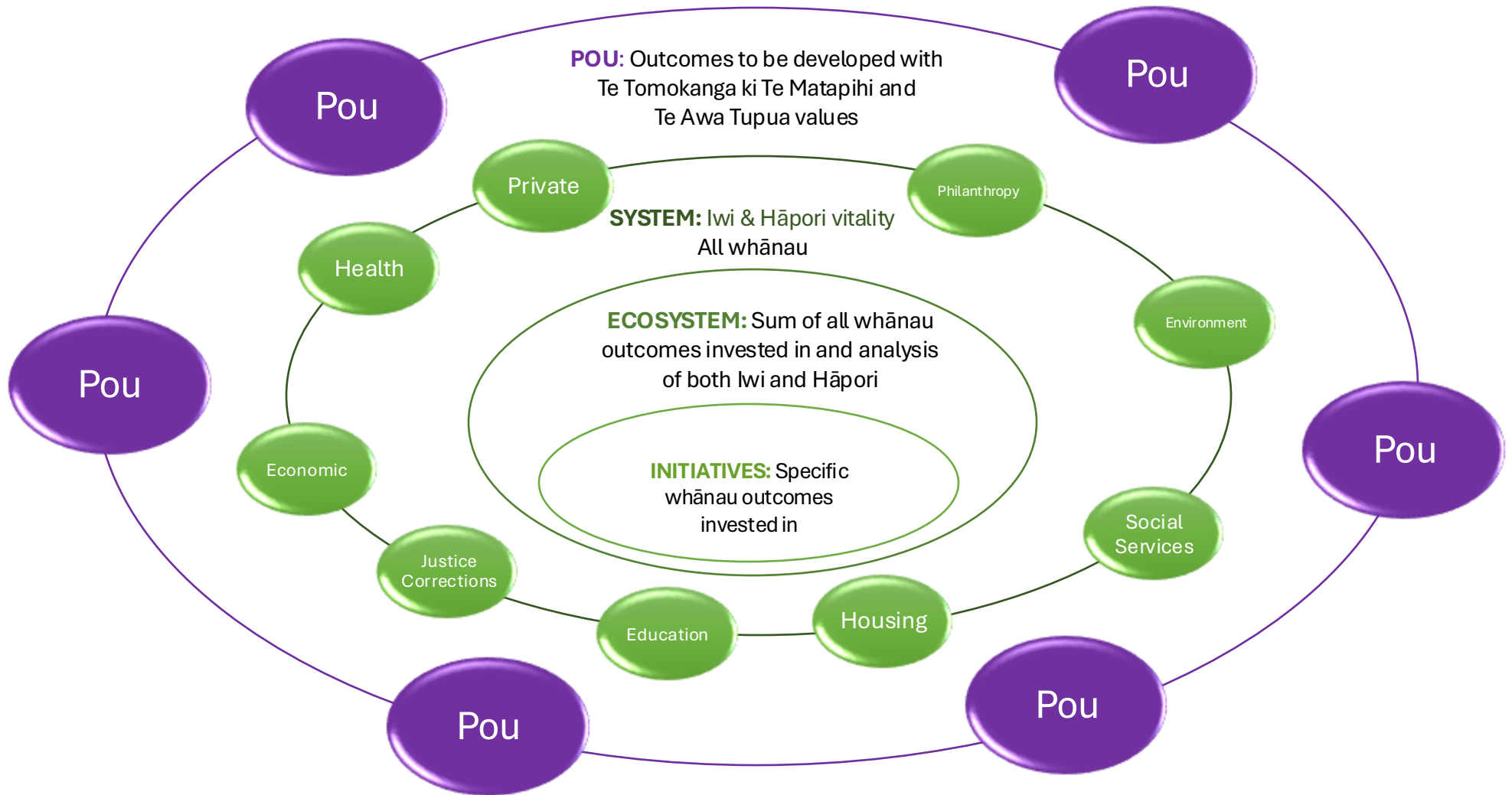
Resourcing supports the collective effort. New ways of working encourage the best use of available resources and evidence attracts new investment

## WHĀNAU ENGAGEMENT

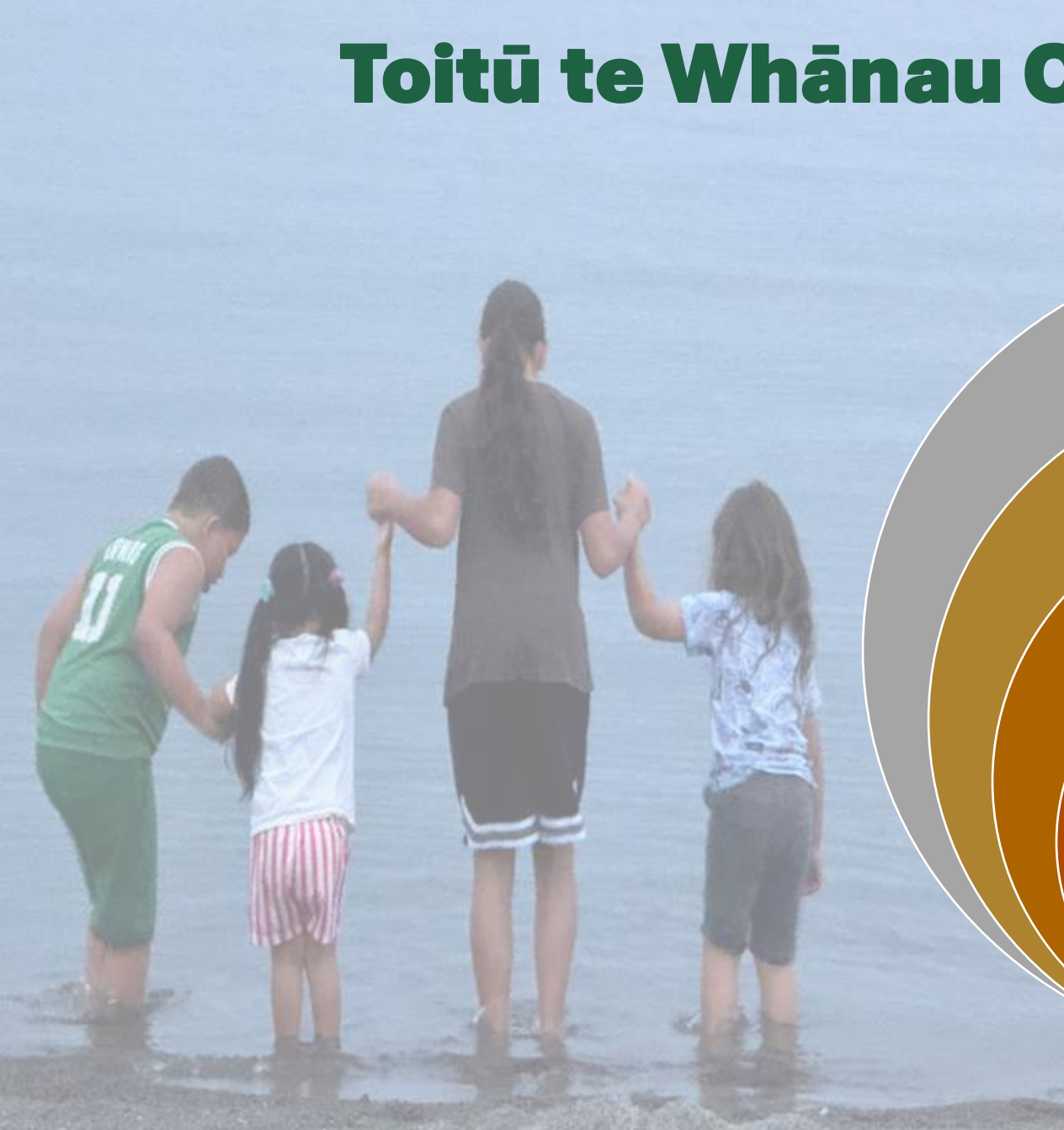
Whānau are empowered to make informed decisions and own solutions and actions relative to the circumstance they are in.

# TOITŪ TE WHĀNAU

*Future interwoven work of Toitū te Whānau with government and other agencies connection*



# Toitū te Whānau Outcomes



Toitū Te Kupu

-

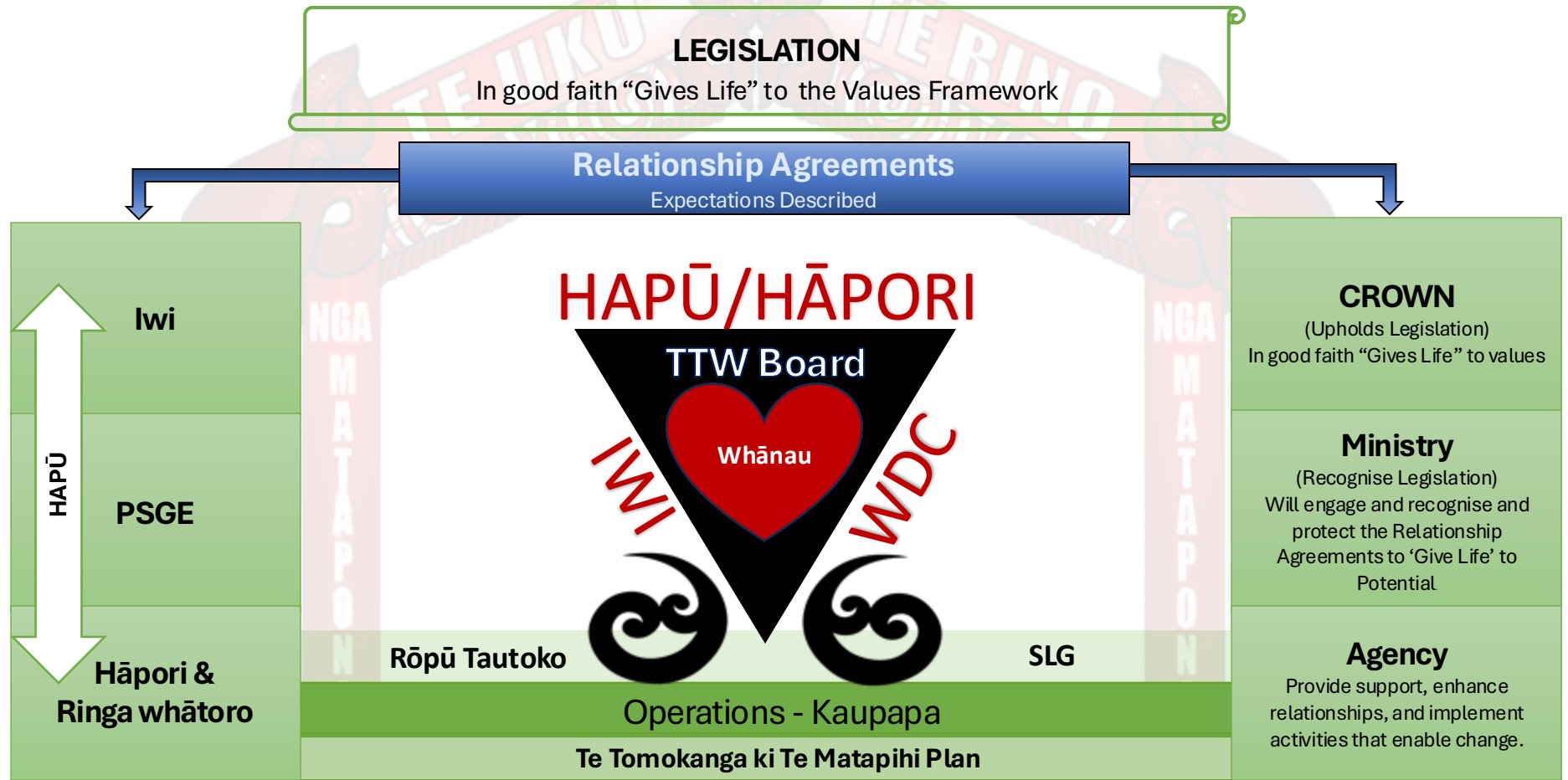
Toitū Te Mana

-

Toitū Te Whenua

# TOITŪ TE WHĀNAU FRAMEWORK

Toitū te Kupu, Toitū te Mana, Toitū te Whenua



Toitū Te Kupu

-

Toitū Te Mana

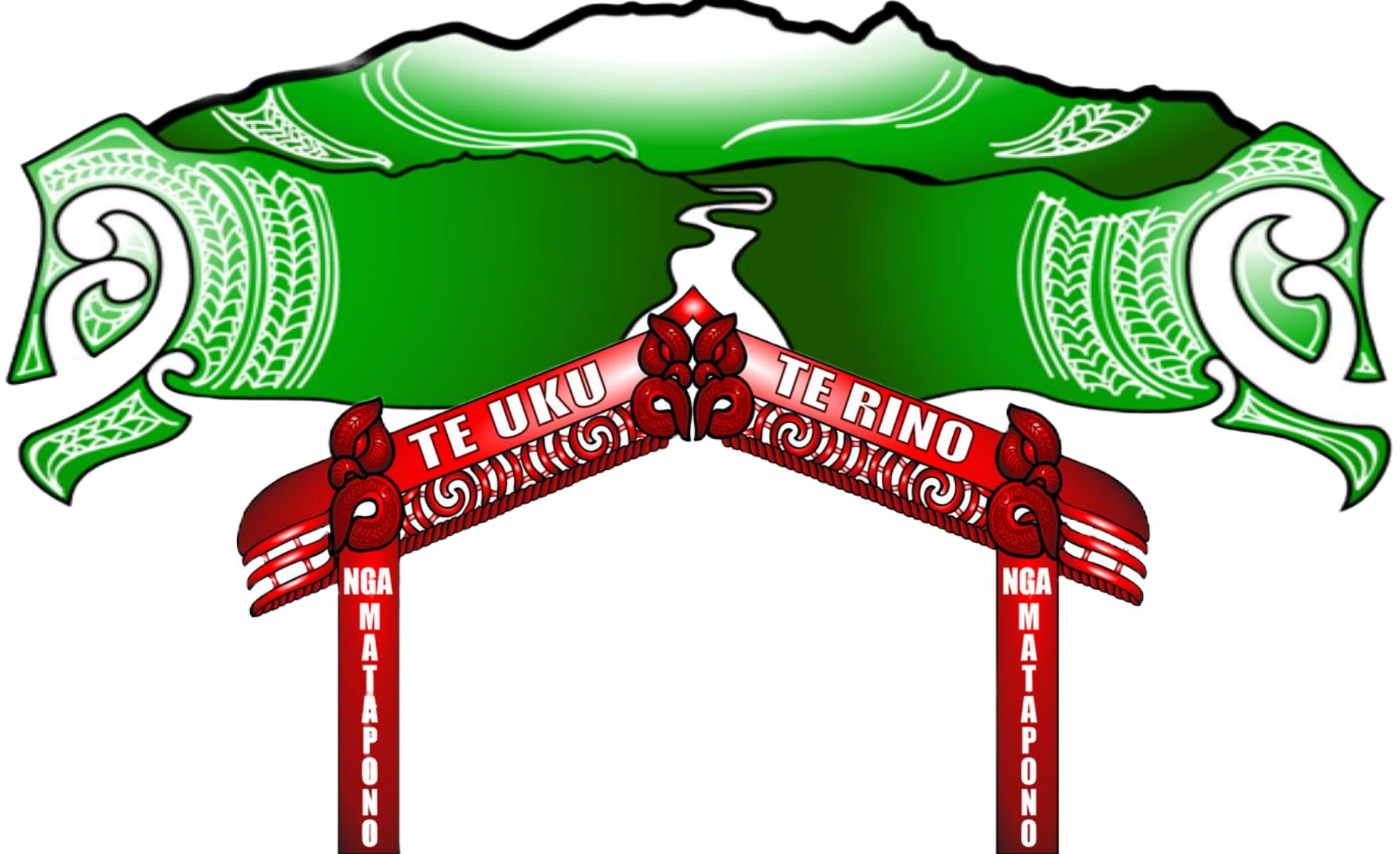
-

Toitū Te Whenua



# NGĀ TUTEI A MARU

*A Joint Statutory Reserve Board*



Toitū Te Kupu

-

Toitū Te Mana

-

Toitū Te Whenua



# NGĀ TUTEI A MARU

## *The Guardians of Maru's domain*

The health and well-being of the land and lakes is paramount for Whanganui Iwi and Hapū, and the communities of the Whanganui District.

The Ngā Tūtei a Maru Board reflects a new era and relationship between Whanganui Iwi and Whanganui District Council, which sees Te Tomokanga ki Te Matapihi as the basis of the relationship.

**PURPOSE:** To uphold and promote the health and well-being of the land and lakes by administering the Whanganui Reserves in accordance with the clarification and purpose of each of the reserves.

**FUNCTIONS:** Give life to Te Tomokanga ki Te Matapihi in all of its decision-making;  
Be the administering body of each Reserve:

- for the purpose of each reserve classification
- for the purpose of protecting and enhancing its cultural, spiritual and ecological values

Subject to finalisation of  
the settlement.

# NGĀ TUTEI A MARU

*The Guardians of  
Maru's domain*

Establishment Fund: Iwi contribution of \$0.5M

Makeup: 6 members, serving a 4-year term

- x3 IWI MEMBERS:
  - WLS PSGE Chair
  - 2 Iwi/Hapū appointed members
- x3 WDC MEMBERS:
  - Whanganui Mayor
  - 2 WDC-appointed members



Subject to finalisation of  
the settlement.

# NGĀ TUTEI A MARU

*The Guardians of  
Maru's domain*

**There will be no change to public access to  
these reserves under the management of  
Ngā Tūtei a Maru.**

- Pukenuamu (Queens Park)
- Part Tāwhero/Gonville Domain
- Kai Iwi Beach/Mōwhānau Reserve  
(Nukumarua Domain)
- Pākaitore (Moutoa Gardens)